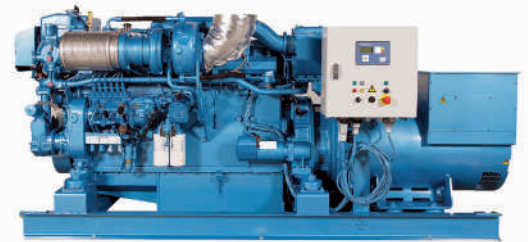


6 M26.2 Marine Generator Set

Model	Injection	Speed control	Cylinder configuration	Bore/stroke (mm)	Displacement (l)
6 M26.2	Mechanical	Electronic	6 in line	150X150	15.90



Customer benefits

Genuine marine design with simple solutions, easy routine maintenance, engine block inspection hatches

Global environment care with low exhaust emissions and controlled fuel consumption at any running cycle

Simple technology with mechanical injection

Life cycle cost efficiency with extended mean time between overhauls (MBTO)

Rating table

Rating	Frequency	RPM	kWm	kWe	kVA
PRP	50 Hz	1500	360	340	425
PRP	50 Hz	1500	385	364	455
PRP	50 Hz	1500	440	416	520
PRP	60 Hz	1800	403	380	475
PRP	60 Hz	1800	460	436	545

Prime running power (PRP)

- Variable load with mean power calculated on 250 running hours
- No restriction on use if mean power $\leq 75\%$ of nominal power
- Total operating time at 100% nominal power shall not exceed 500 hours per year
- 10% overload available 1 hour each 12 hours

Power definition

Standard ISO 3046/1 - 1995 (F)

Reference conditions

Ambient temperature	25 °C / 77 °F
Barometric pressure	100 kPa
Relative humidity	30%
Raw water temperature	25 °C / 77 °F

Fuel oil

Relative density	0,840 \pm 0,005
Lower calorific power	42 700 kJ/kg
Consumption tolerances	\pm 5%
Air inlet limit temperature	35 °C / 95 °F

Emissions

IMOTier II



Standard equipment

Engine and block

Cast iron cylinder block, with replaceable cylinder liners
 Separate cast iron cylinder heads
 Replaceable valves guides and seats
 Steel forged crankshaft with 7 bearings
 Light alloy piston with 3 high performance piston rings

Cooling system

Fresh / raw water heat exchanger with integrated thermostatic valves and expansion tank
 Cast iron centrifugal fresh water pump, mechanically driven
 Bronze self-priming raw water pump, mechanically driven

Lubrication system

Full flow screwable oil filters
 Fresh water cooled lube oil cooler

Fuel System

In line injection pump with flanged electronic speed governor
 Double wall injection bundle
 Duplex fuel filters

Intake air and exhaust system

Fresh water cooled exhaust gas manifold
 Fresh water cooled turbo blower

Electrical system

Voltage 24Vdc
 Electrical starter on flywheel crown

Generator

- 50/60Hz Frequency, 4 Pole
- Insulation / Heating Class H/H
- Electronic voltage regulation
- Brushless excitation
- IP23 Protection, Marine impregnation
- Single bearing

Specific fuel consumption

Frequency	PRP				75% PRP			50% PRP		
	kWe	kWm	g/kWh	l/h	kWm	g/kWh	l/h	kWm	g/kWh	l/h
50 Hz	340	360	202	86	270	201	66	180	210	45
50 Hz	364	385	200	91	289	200	68	193	208	47
50 Hz	416	440	200	104	330	200	78	220	203	53
60 Hz	380	403	206	98	302	206	74	202	215	51
60 Hz	436	460	205	112	345	205	84	230	210	57

Dimensions and dry weight (mm / kg)

A	B	C	Weight
3070	1370	1450	3300

